



EMSCULPT

Before using the instrument, please read this manual carefully and strictly follow the instructions in the manual to operate it.

1. Outline

Muscles account for about 35% of the body, and most slimming devices on the market only focused on fat but not muscles. While currently only injections and surgery are used to improve the shape of the buttocks. In contrast, HIFEM beauty muscle instrument, which uses the most advanced (HIFEM) high-intensity focused magnetic vibration technology, directly stimulates motor neurons, so that the body's muscles continue to expand and contract (This kind of contraction cannot be achieved by your usual exercise or fit exercise) The energy pulse of 30 minutes treatment can stimulate 30000 strong muscle contractions, which help the fat cells to metabolize and decompose vigorously. At the same time, with muscle strengthening, it brings new technological experience for body shaping. It has won the international certification of FDA and CE, and its safety and effectiveness have been widely recognized.

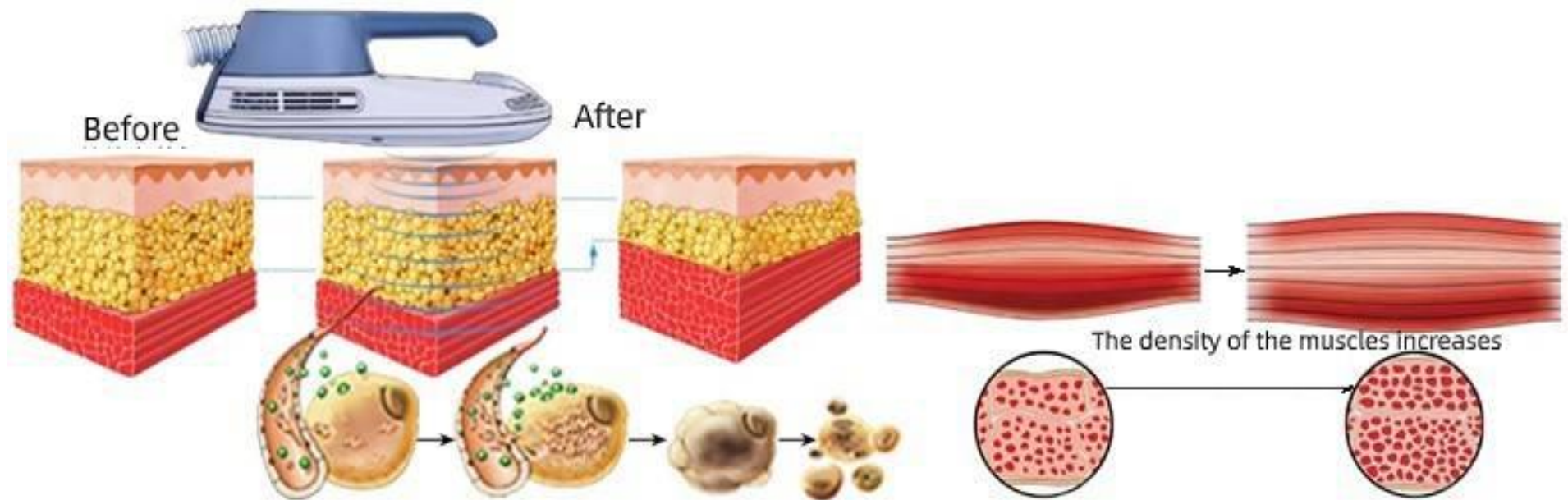
HIFEM beauty muscle instrument has two treatment handles, which support independent and synchronized work; The treatment parameters of both handles can be adjusted independently; it can be operated by two persons at the same time, and can be placed in the abdomen, buttock, upper arm (biceps, triceps), thigh and other parts alone or at the same time. For those who want to quickly reduce fat and increase muscle or change their body shape, or those who have no time or difficulty in persisting in exercise, can achieve abdominal muscle vest line, peach buttocks and separated rectus abdominis for postpartum women, It is an innovative reform equipment."HIFEM " can easily shape muscle and reduce fat for you, and the effect is remarkable. The device is non-invasive, safe and painless, no radiation, no side effects, no need for anesthesia, you can be thin when lying down, it can tighten muscles and lose weight, there is no discomfort during the treatment, and there is no need for a recovery period after the treatment.

2. Working principle

HIFEM beauty muscle instrument uses non-invasive HIFEM technology to release

high-frequency magnetic vibration energy through two large treatment handles to penetrate the muscles to a depth of 8cm, and induce continuous expansion and contraction of muscles to achieve high-frequency extreme training , to deepen the growth of myofibrils (muscle enlargement), and produce new collagen chains and muscle fibers (muscle hyperplasia), thereby training and increasing muscle density and volume.

The 100% limit muscle contraction of HIFEM technology can trigger a lot of lipolysis, Fatty acids are broken down from triglyceric acid, and accumulated in large amounts in fat cells. The fatty acid concentration is too high, which will cause fat cells to apoptosis and be excreted from the body by normal metabolism within a few weeks. Therefore, HIFEM beauty muscle instrument can strengthen and increase muscles while achieving the effect of reducing fat.



3. Advantage

1. It can set different muscle training modes.
2. Dual handles independently control the energy output, the handles support independent and synchronized work; the treatment parameters of both handles can be adjusted independently; it can operate two persons at the same time, suitable for men and women.
3. It's safe and non-invasive, non-current, non-hyperthermia, and non-radiation, and no recovery period.

4. No knife, no injection, no medicine, no exercise, no diet, Just Lying down can burn fat and build muscle, and reshape the beauty of lines.
5. Saving time and effort, only lying down for 30 minutes = 30000 muscle contractions (equivalent to 30000 belly rolls / squats)
6. It's simple operation and bandage type. The operating head only needs to be placed on the operating part of the guest, and it can be reinforced with a special equipment band, without the need for a beautician to operate the instrument, which is convenient and simple.
7. It's non-invasive, and the process is easy and comfortable. Just lie down and experience it like a muscle is sucked up.
8. During the treatment, there is only a feeling of muscle contraction, no pain and no sweat, and there is no side effects on the body, just do it and go.
9. There are sufficient experimental studies to prove that the treatment effect is remarkable. **It only takes 4 treatments within two weeks, and every half an hour, you can see the effect of reshaping the lines in the treatment site.**
10. **The cooling system of water circulation prevents the treatment head from generating**

high temperature, which greatly improves the stability of energy output.

4. Daily maintenance of Machine

1. Water injection

- In order to facilitate the transportation and transshipment of the equipment, the manufacturer shall drains all the water in the equipment before transportation. Pure water must be injected before the equipment is used.
- There are labels on the back of the instrument, which are water injection hole and overflow hole according to the label. First screw out the sealing cap of the water injection hole and overflow hole, plug the funnel water pipe into the water injection hole, pour the pure water from the funnel until there is water overflowing from the overflow hole, and then screw on and tighten the sealing cap.

2. Water exchange and drainage

- When using the equipment, remember that the water in the equipment must be drained out during transportation
- In order to extend the service life of the equipment, it is recommended to change the water once a month, and to ensure that the water quality in the instrument is good, to avoid the growth of bacteria and prevent the waterway from being blocked; when the instrument is used frequently, it

is recommended to change the water once every 15 days before continuing to use it. .

- How to change the water? Draining water before changing water. **Method of draining water :** Screwing out the sealing cap of the drain hole of the equipment, and the water in the equipment will flow out automatically. Screwing on and tightening the sealing cap after the water is completely discharged. **Method of adding water :** Plug the funnel pipe into the water injection hole and start adding water until the water flows out from the overflow hole, indicating that the water is full.
- Note: when draining water, put the working handle on the handle bracket.
- Note: The water can be filled and discharged only when the machine is turned off and the power is cut off.

3. Maintenance

- The instrument must use a plug with a grounding pin, and ensure that the power socket of the instrument is well grounded.
- Ensuring that the power supply is stable and adaptable. If the local power supply voltage is unstable, it is recommended that the user add a regulated power supply with matching power.
- When the device is in use, keep away from the wall and keep a 30cm space around the device for heat dissipation.

- After each treatment, wet the towel with normal saline to clean the accessories.
- Do not use alcohol or corrosive solvents to clean the host and handle to avoid damage.
- The working handle should be handled gently, and it is strictly forbidden to drop it to avoid damage.
- In the process of use, the working handle should avoid extreme bending and damage.
- Do not place the instrument in an environment with high temperature, humidity, dust, and direct sunlight. The instrument should be placed in a dry, cool and ventilated room with a temperature of 5 to 40°C and a humidity of no more than 80%.
- When the instrument is not in use, please turn off the power, then unplug the power plug and place the various accessories of the instrument. If possible, cover the instrument with a dust cover.
- If it is not used for a long time or when it is being transported, please screw out the sealing cap of drain hole to drain the water.
- It is strictly forbidden to disassemble and modify equipment without authorization.
- If there is any fault in the equipment, it should be shut down immediately and please contact us.

5. Instructions

1. Installation: install the bracket and rack, and then align the handle with the interface end at the rear of the equipment and insert it on the rack.
2. Warm tips! For the first time, it must be filled with water before starting up. Never work without water!
3. Insert the power cord into the rear interface of the device and connect the power supply; turning on the power switch, and the device will start up immediately. It needs to be started up for 2-3 minutes before operation.

4. Machine Display



6. **Interface introduction**

1. Enter into Main Interface: Figure 1

Figure 1

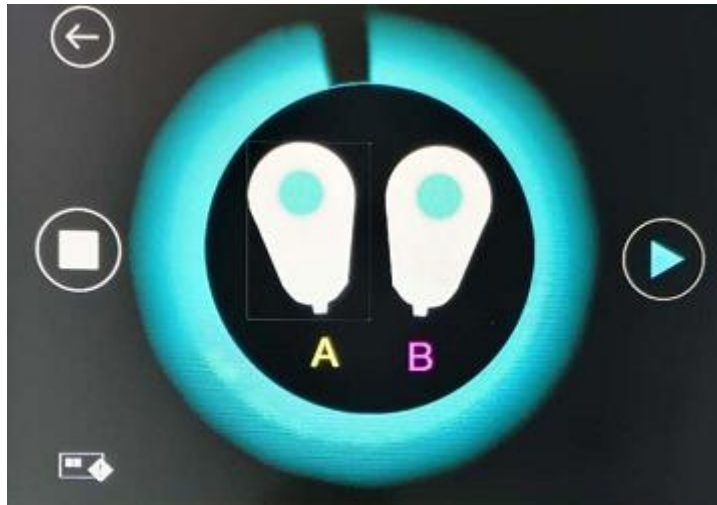


- Setting the intensity, rang from 1% (weak) to 100% (strong)

【Intensity A】 : A handle intensity, click 【-】 and 【+】 of intensity setting to adjust.

【Intensity B】 : B handle intensity, click 【-】 and 【+】 of intensity setting to adjust.



The treatment starts from low intensity, and should be gradually increased according to the patient's tolerance.



Applicator A and Applicator B are separately, choose correct handle on screen to set correct working handle accordingly.

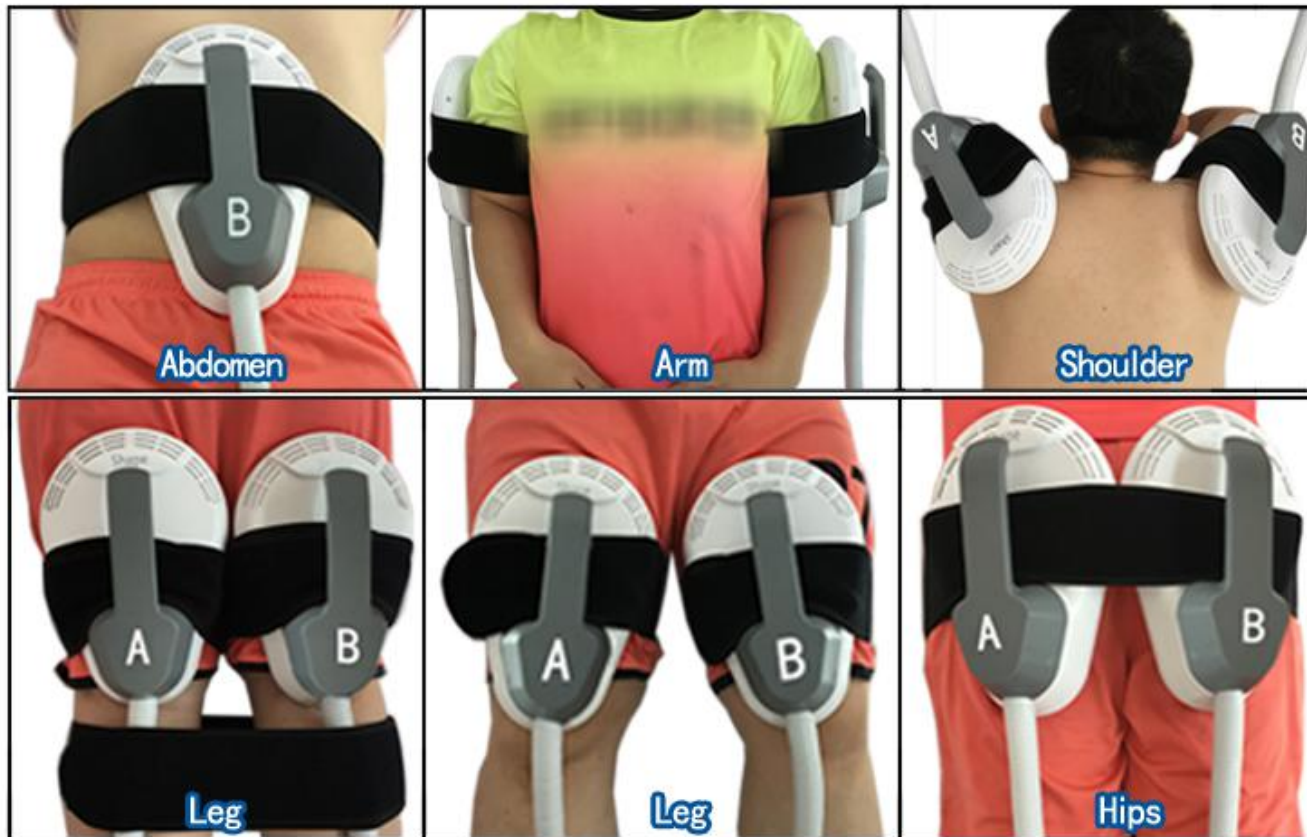
- Setting the working time. The default working time of system is 30 minutes, click 【+】 and 【-】 to adjust. The time range can be adjusted from 1 to 30 minutes, and the operation of each part

is not over 30 minutes.

- Click“”to start, if you need to pause, please click“”, to stop.

7. Operating position

The position of the operation must be the same as the selected part of the interface



8. Precautions and contraindications

- 1、 Don't operate head, neck/carotid artery, or near the thoracic gallery.
- 2、 The two handles cannot work against each other.
- 3、 The healer should not carry any metal objects.
- 4、 Don't be full during treatment, and treat at least 1 hour after meals.
- 5、 The operation site and treatment probe should be dry without water.
- 6、 The operating energy varies from person to person and increases gradually from low energy.
- 7、 The total operating time of a day does not exceed 1.5 hours, and one part does not exceed 1 hour.
- 8、 Do not put any electronic products or metal objects on the instrument during operation.
- 9、 Don't eat or enter water during operation
- 10、 After the end of the operation, try to eat again after 1 hour (drink more water and eat food with high protein content).
- 11、 Those people with the following conditions cannot receive treatment:
 - ▲ The project should avoid menstruation, pregnancy and lactation;
 - ▲ Those patients with heart disease, hypertension, thyroid, malignant tumor, renal failure, epilepsy and muscle strain should be used cautiously;

- ▲ Those people with metal or electronic implants (metal contraceptive ring, cardiac pacemaker, cardiac defibrillator, nerve stimulator, drug pump and stent) should be used cautiously;
- ▲ Those patients with thrombophlebitis, cerebrovascular disease (stroke patients), brain injury or with brain surgery should be used cautiously.

9. FAQ

1、 Who is suitable for HI-FEM beauty muscle instrument?

This technique can provide beneficial muscle tightening for most people. Five groups are sorted out

- ① Women who need to gain muscle and change their shape-buttocks, waistcoat line, to show women a graceful posture.
- ② Men who need to gain muscle and change their body-gain muscle, especially sculpted chocolate muscle.
- ③ People who need to lose weight-suitable for both men and women, more suitable for busy office workers
- ④ Those people who need to lose weight quickly-brides, models, actors, etc.

⑤Postpartum mother (Separation of rectus abdominis)——Improve the shape of the abdominal muscles and shape a flat abdomen

2、 Is there a difference in the effect of abdominal treatment with one or two treatment heads? How should we choose?

A: It is recommended that all patients use two treatment heads at the same time. Both treatment heads must be in full contact with the skin, and not hover sideways or extend beyond the treatment area. This will ensure that all abdominal muscles are treated and activated. Using one treatment head at a time is only recommended for patients with small care sites. Both therapies are equally effective.

3、 Will it melt fat while lifting the hips?

A: Many studies have confirmed that the metabolic activity of buttock fat is lower than that of abdominal fat. Because of this, it will not dissolve fat when treating buttocks.

4、 Is the depth of energy penetration safe? Will it affect the internal organs?

A: HIFEM technology has existed for decades, and its safety has been proven by dozens of studies. The only tissue that responds to energy is motor neurons, so it has no effect on other tissues including organs.

5、 How is the feeling to do HIFEM beauty muscle machine? Will it hurt?

A: The process is painless and noninvasive. There is no need for anesthesia. The feeling during the treatment is the same as that of your muscles during intense exercise.

6、 How long will a course of treatment take? How long will it take effect?

A: 4 times for a course of treatment, interval 2-3 days to do once, generally open a card set 6-8 courses of treatment, which can get good results. The best results are in the 2-4 weeks after the treatment. To break down fat and increase muscle mass, patients need to be patient. Usually after 12 treatments, muscle mass increases by approximately 16% and fat can be reduced by 19%.

7、 How long will the effect last?

A: The effect can be maintained for one year after 6 courses. But some people may need additional treatment to achieve the best results. If you have a course of treatment every 2-3 months, you can maintain a better and best condition. At the same time, customers can visit the store multiple times.

8、 How long does it take ?

A: There is no need for manual operation, and the automatic mode of calcination is set, and it only takes 30 minutes each time.

9、 Does the magnetic energy of this instrument have radiation? Is it safe?

A: The movement of human muscle is driven by magnetic vibration energy, not by electromagnetic radiation. Radiation on the human body feel hot, but our HIFEM beauty muscle instrument is not hot at all when it works in the human body. It emits less radiation than our regular cell phones. We also specially made a test report for it, which proved that its radiation range is within the national safety electrical appliances ! If so, this technology will not be certified by the US FDA and used in foreign hospitals.

10、 Is the thick fat layer not suitable for HIFEM beauty muscle instrument?

A: HIFEM technology can penetrate 8 cm below muscle layer. However, if the patient's fat is thick, the energy may not be able to penetrate into the muscle tissue thoroughly, so it is difficult to make the muscle contract and achieve the therapeutic effect.

11、 Can it be combined with other body care treatments?

It can be combined with some non-traumatic fat-removing care, such as various fat-reducing equipment, to eliminate more fat. In addition, it can be combined with some postpartum repair care to improve the health and physical problems of postpartum women.

10. Clinical cases



Before



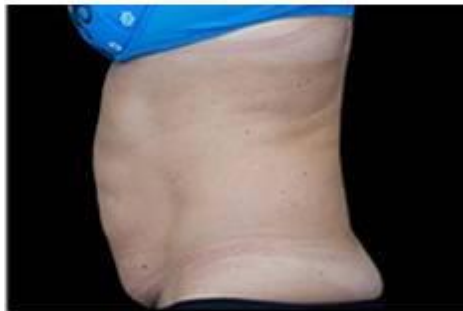
After the fourth treatment



Before



After the fourth treatment



Before



8 weeks after the fourth treatment



Before



12 weeks after the fourth treatment



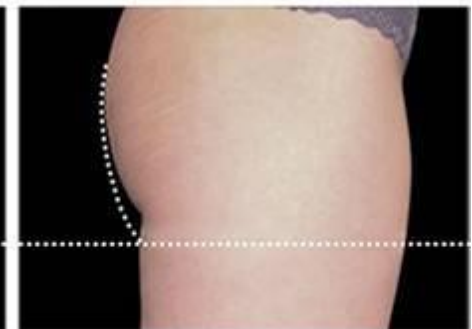
Before



8 weeks after the fourth treatment



Before



4 weeks after the fourth treatment



Before

After the fifth treatment

After the eighth treatment



Before

after



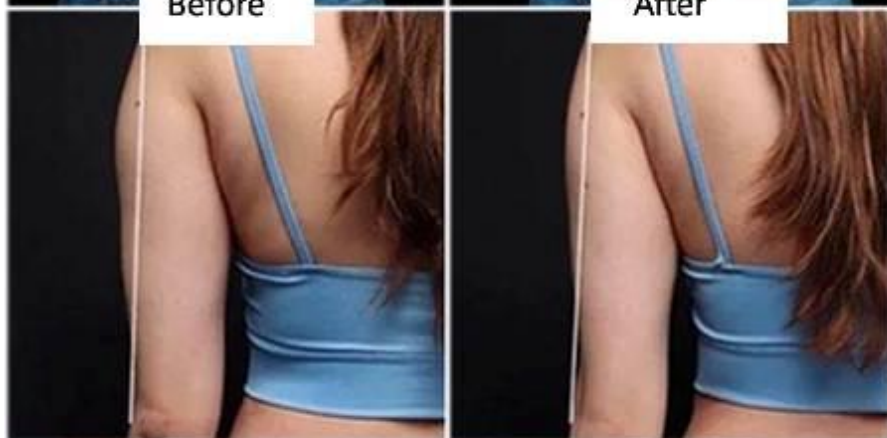
Before

After



Before

After



Before

After



Before



After

11. Technical specifications

Product name	HIFEM Beauty muscle instrument
Magnetic vibration intensity	7 Tesla
Input voltage	AC110V-240V
Output power	300W-4500W
Output Frequency	1-100HZ
Fuse	20A
Size of flight shipping Case	63×67×143cm
Weight	75kg